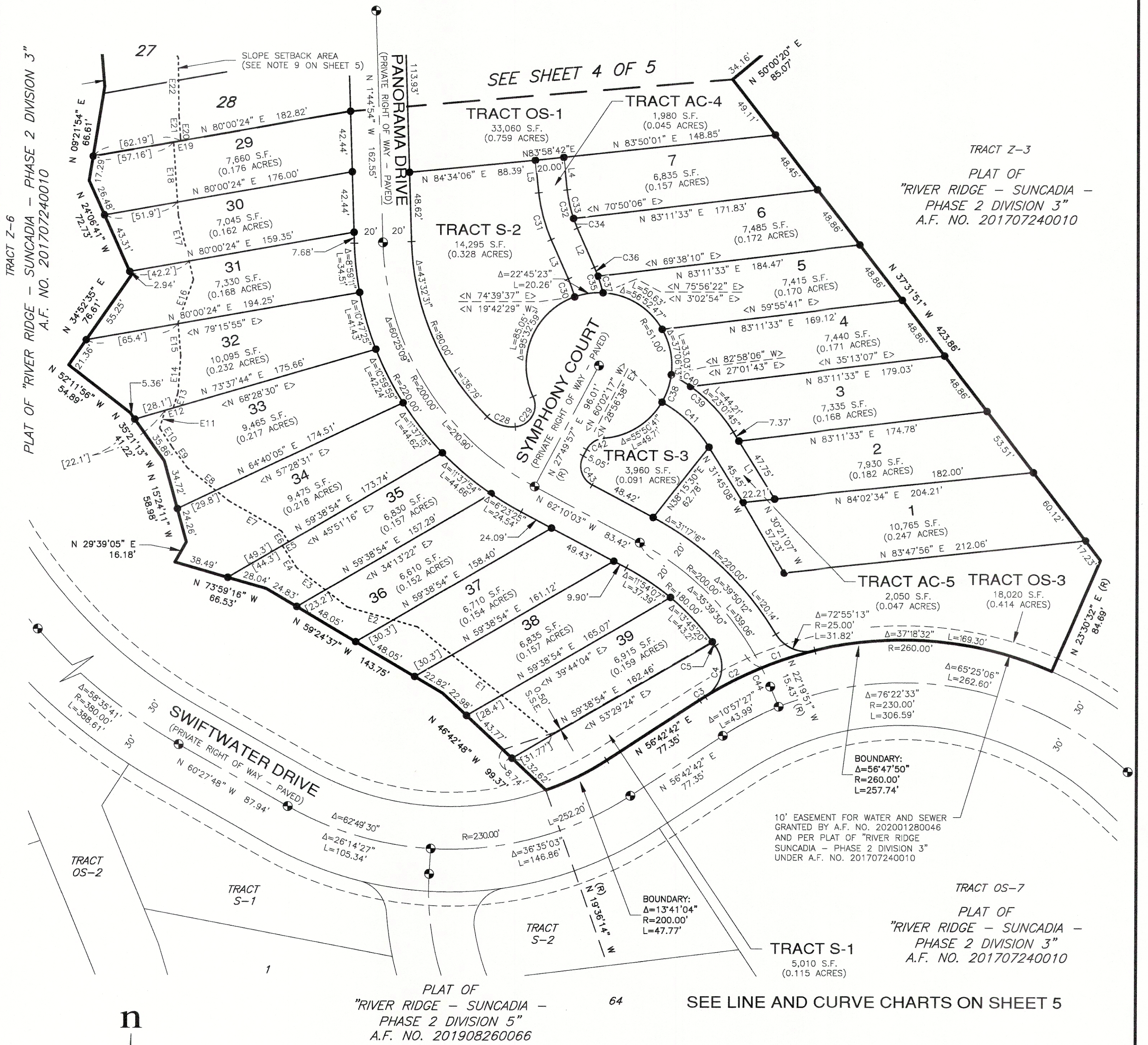


# THE CABINS AT THE FARM SUNCADIA - PHASE 2 DIVISION 4

A PORTION OF SECTION 18, T. 20 N., R. 15 E., W.M.  
KITITAS COUNTY, WASHINGTON  
ASSESSOR MAP NUMBER 20-15-18053-0053

AUDITOR'S REFERENCE

LP-20-00001  
LPF-20-0000



### LEGEND

- SET SURFACE BRASS CAP STAMPED: "L.S. 44925"
- SET 5/8" REBAR WITH CAP STAMPED: "ESM LLC 44925 45782" IN THE EVENT THAT A NON-REMOVABLE OBSTACLE PREVENTS SETTING THE ACTUAL PROPERTY CORNER, A STAMPED 2" ALUMINUM CAP WILL BE SET ON THE PROPERTY LINE AS AN OFFSET TO THE ACTUAL CORNER WITH THE DISTANCE TO THE ACTUAL CORNER NOTED THEREON.
- Δ DELTA
- R RADIUS
- L ARC LENGTH
- (R) RADIAL BEARING
- < > RADIAL BEARING AT LOT CORNER
- << >> DISTANCE MONUMENT TO MONUMENT
- OS-1 OPEN SPACE TRACT - DESIGNATION NUMBER
- S-1 SERVICE TRACT - DESIGNATION NUMBER
- AC-1 ACCESS TRACT - DESIGNATION NUMBER
- [X.X] DISTANCE TO SETBACK LINE
- S.S.E. SANITARY SEWER EASEMENT

### RECORDING CERTIFICATE

FILED FOR RECORD AT THE REQUEST OF KITITAS COUNTY BOARD OF COMMISSIONERS, THIS \_\_\_\_\_ DAY OF \_\_\_\_\_ A.D., 2020, AT \_\_\_\_\_ MINUTES PAST \_\_\_\_\_ O'CLOCK \_\_\_\_\_ M., AND RECORDED IN VOLUME \_\_\_\_\_ OF PLATS, ON PAGES \_\_\_\_\_, RECORDS OF KITITAS COUNTY, WASHINGTON.

BY: \_\_\_\_\_  
DEPUTY COUNTY AUDITOR KITITAS COUNTY AUDITOR

AUDITOR'S REFERENCE: \_\_\_\_\_

**ESM CONSULTING ENGINEERS LLC**  
33400 8th Ave. S, #205  
Federal Way, WA 98003  
www.esmcivil.com

FEDERAL WAY (253) 838-6113  
EVERETT (425) 297-9900

Civil Engineering | Land Surveying | Land Planning  
Public Works | Project Management | Landscape Architecture

DATE: 2020-09-03 JOB NO. 2111-001-019-0002  
DRAWN BY: C.A.F./R.F.G. SHEET 3 OF 5

